



MENT
ARCH

KLS
IMER
Institute of
Management
Education
& Research

KLS
IMER
Institute of
Management
Education
& Research

About Relevance, Exposure, and Placements

... since 1991

PROSPECTUS | 2018

About Karnatak Law Society, Belagavi

Karnatak Law Society, founded by eminent lawyers of Karnataka in 1939, has been rendering a yeoman service in the sphere of professional education in this part of the country.

Starting with Law College in November, 1939, the Society has expanded its educational activities to Commerce, Management and Technology. All its Institutions have earned reputation as 'lead colleges' in Karnataka.

The Board of Management consists of group of quality conscious professionals comprising of lawyers, doctors, engineers, chartered accountants and entrepreneurs.

KLS Management

President

Shri. Anant N. Mandgi, Advocate

Vice - Presidents

Shri. R. B. Bhandare, Industrialist

Shri. D. V. Kulkarni, Consulting Engineer

Chairman

Shri. M. R. Kulkarni, Advocate

Secretaries

Shri. A. K. Tagare, Advocate

Shri. P. G. Badkundri, Advocate

KLS Institutions

- Raja Lakhamgouda (RL) Law College.
- Gogte College of Commerce (GCC).
- Gogte Institute of Technology (GIT).
- Institute of Management Education and Research (IMER).
- Vasantrya Potdar Polytechnic (VPP).
- KLS GCC Bachelor of Business Administration.
- KLS Gogte Pre-University College of Science.
- KLS GCC Bachelor of Computer Application.
- KLS English Medium School.
- Viswanathrao Deshpande Institute of Technology (VDIT), Haliyal.
- KLS Pre-University College, Haliyal.
- KLS GCC Master of Commerce.
- KLS BCA College, Haliyal.
- KLS Public School.

Members

Shri. V. G. Badkundri

Shri. Rajendra Belgaumkar

Shri. S. M. Kulkarni

Shri. S. P. Joshi

Shri. S. G. Punekar

Shri. P. S. Kulkarni

Dr. V. V. Huilgol

Shri. Atul K Alur

Shri. P. S. Sawkar

Shri. S. V. Ganachari

Shri. V. M. Deshpande

Smt. Ujwala Mandgi

Shri. U. N. Kalkundrikar

Shri. Ashok A Kulkarni

Shri. Pramod Kathavi

Shri. Vivek G Kulkarni

Shri. R. S. Mutalik (Desai)

Shri. Vinayak Lokur

Shri. S. G. Adhyapak



About KLS IMER

KLS IMER started its journey in 1991, and offers a 2 years full time degree in Master of Business Administration (MBA), affiliated to Rani Channamma University (RCU), Belagavi, and is recognized by AICTE, Ministry of Human Resources Development, New Delhi.

The beautiful KLS IMER campus bustles with students making the most of spacious classrooms, specialization zones, a well stacked library, computer lab, reading room, digital library, Centre for Peace and an excellent auditorium.

KLS IMER is an Institute with a difference where students learn to apply the science of business to the art of management. KLS IMER has been:

- Accredited by NAAC with grade "A".
- Bestowed with A+ + by Business India and Dalal Street Finance Journal consecutively for 3 years.
- Awarded with the best B-School award in Karnataka by Brands Academy, New Delhi.
- Recognised among "Top Institutes of India" by Competition Success Review (CSR).

Vision

To excel in Management Education, Research, Consultancy, Industry Institute Interface and Alumni Relations.

Mission

To transform every student into an industry ready and motivated business leader with an entrepreneurial mindset.

Values

Integrity | Commitment | Passion

Quality Policy

To continually improve processes of admission, teaching, learning, examination, evaluation, placement, alumni relations, research and extension in order to become an industry friendly Institution of academic excellence.

KLS IMER Governing Council



Shri. Rajendra Belgaumkar
Chairman GC



Shri. Ram Bhandare
Member GC



Shri. P. G. Badkundri
Member GC



Shri. V. M. Deshpande
Member GC



Shri. R. S. Mutalik (Desai)
Member GC



Shri. Pramod Kathavi
Member GC



Shri. V. S. Lokur
Member GC



Shri. Ashok A. Kulkarni
Member GC



Shri. S. V. Ganachari
Member GC



Impressive Infrastructure

Meaningful education, the IMER way

IMER firmly believes that meaningful education is the outcome of learning and doing in combination. Students at IMER go through an intense program that packs in a total of 50 hours per week that include 25 hours of classroom teaching, 8 hours of lab work, 15 hours of project work and 2 hours of industry exposure.

Nurturing the individual

Effective managers are born out of strong individuals. Hence, at IMER we first nurture the individual by building confidence, enhancing communication skills, developing quick thinking skills and promoting decision-making abilities.

Innovative Pedagogy

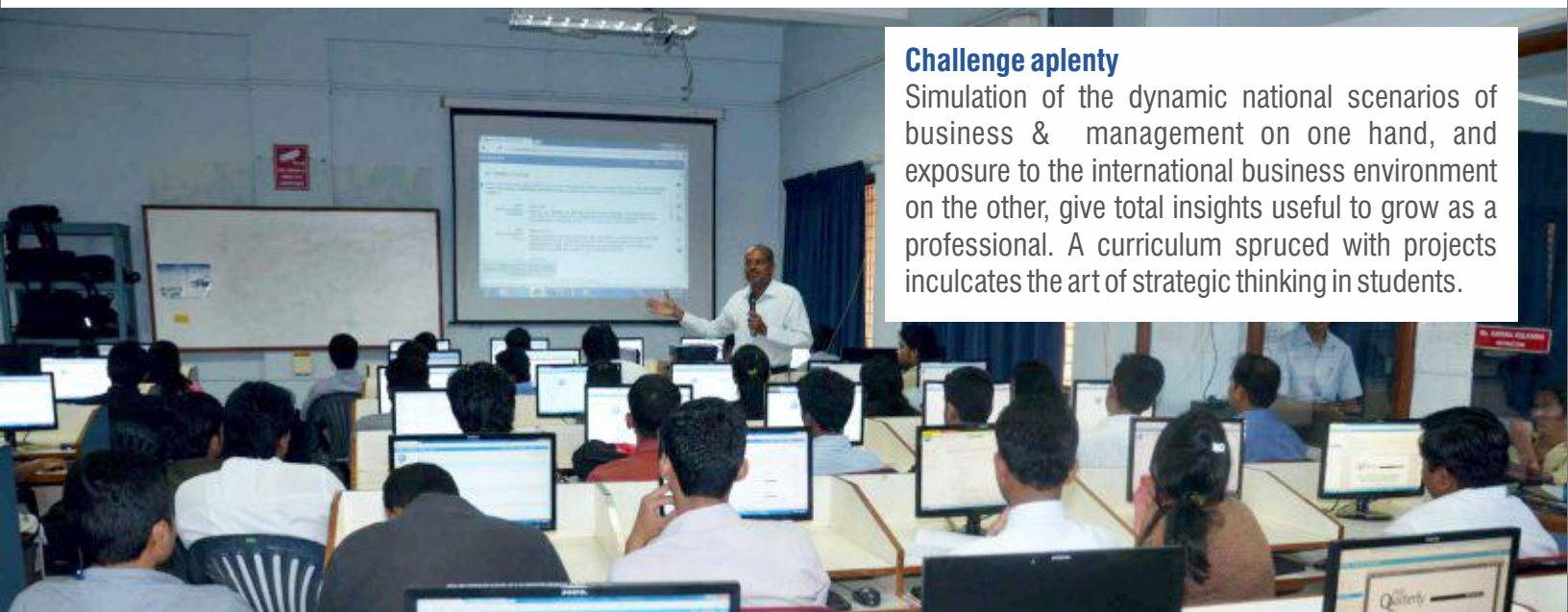
The learning environment combines various innovative teaching methods. The rat-race for marks through bookish knowledge just does not exist at IMER. Practical knowledge and creative applications are reinforced as means to succeed.

Teamwork & Leadership

At IMER, we strongly believe that leadership and teamwork are interdependent. Our students take on both the roles. Outbound programs are an integral part of our effort.

Exposure to creative thinking

We expose students to active management gurus from various industries and sectors. Students assimilate diverse experiences and translate them into creative and inclusive solutions.



Challenge aplenty

Simulation of the dynamic national scenarios of business & management on one hand, and exposure to the international business environment on the other, give total insights useful to grow as a professional. A curriculum spruced with projects inculcates the art of strategic thinking in students.



Integrated learning experience

Our spacious campus is situated conveniently in the city, creating a perfect ambience for the students to utilize well planned resources available at IMER. All these resources combined are created to cater to the learning requirements of the students and help them to improve their efficiency and competencies.

Classrooms

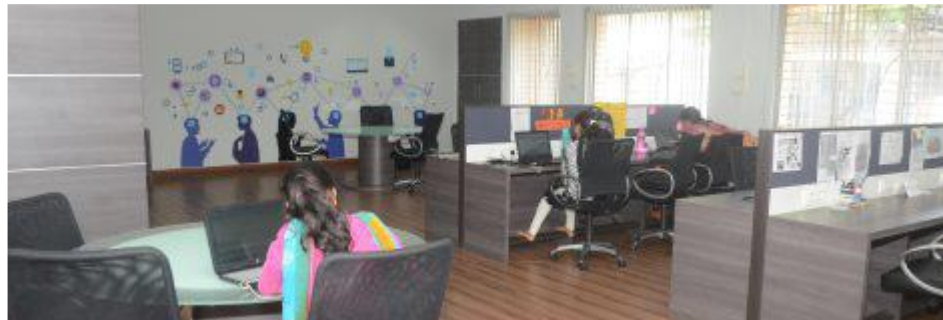
The venue for interactions, presentations, thought provoking & brainstorming sessions, these rooms are equipped with hi-tech support equipment.

Computers

LCD Projectors

Audio Visual Video lecture capture system

Business Incubation Centre



From theory to practice at KLS IMER

Library

IMER Library is an invaluable resource for students, researchers and faculties of business and management.

The library has a robust collection of over 17500 books, 7500 titles, 120 current subscriptions to journals and magazines, newspapers, and many other resources like thesis, project reports of students, CDs/DVDs, NPTEL course materials, back issues of journals. The library, spread over 375 Square Meters, also provides access to the best digital resources to various databases like Capitaline, EBSCO & j-Gate company of e-journals. It provides access to more than 22,000 online full text/abstracts to journals, Company profiles etc. The functions and services of the library are fully automated.



Hubs for discussion have been created for exchange of ideas, group discussions and other such activities that lead to healthy interactions. A coffee machine has also been provided in this area to foster discussions and interesting debates.

Auditorium

Our large, air-conditioned & acoustically designed auditorium is the venue for all our discourses, seminars, conferences, presentation and other events. It accommodates 300 people and is a constantly alive with cultural, educational and recreational activities for and of our students.



The *cafeteria* @ IMER - Provides food for thought as well as the platter.



Workshop Hall

This hall hosts a number of events, meetings, press meets, corporate meets and faculty discussions. This hall is used for smaller group interactions and well suited for interactive presentations.

FITNESS FOR BODY & MIND



Our fitness centre is well equipped with modern exercise equipment and is operated under the watchful eyes of physical education director.

Besides we have facilities for indoor games like table tennis, chess, carrom board and an outdoor volleyball court.

Yoga sessions are conducted on & off campus too.

Transportation

Students can avail our transport facility to the Institute, for Industrial visits, field projects, placement drives.



Flagship Events @ KLS IMER



Samagam

Youth & innovation, Youth & creativity, Youth & leadership, these are the underlying messages of SAMAGAM - a festival of creativity & innovation for undergraduates. Samagam means coming together. It gives an opportunity for students to work in teams. They laugh & cry together, face joy & learn about real life, planing, organising & creating.

Superlative Internship Project

Every year we conduct a Superlative Internship Project (SIP Contest) to enable students to showcase their Internship projects. The competition is open to students from MBA colleges all over the state. The top 3 projects are awarded attractive cash prizes and certificates.



Aarambh

Aarambh is an orientation program for newly admitted MBA students. This is platform for common learning and understanding of diverse educational backgrounds that their new compatriots come from.

Foundation Day

KLS IMER celebrates its Foundation Day (the birth anniversary of late Shri. Raosaheb B.M. Gogte, Patron of Karnatak Law Society) on 16th September every year.

On this day we identify a successful local entrepreneur and felicitate him/her in order to foster entrepreneurship in the region.



The IMER advantage

Tie-ups with World Class Organisations



TiE (The Indus Entrepreneurs)

As an institutional member of TiE Hubli, IMER organizes TiE connect programs, My Story sessions, conclaves etc. for the local entrepreneurs, students and academicians to foster entrepreneurial culture amongst them and to create entrepreneurial environment in the region.

EDI, Ahmedabad

Entrepreneurship Development Institute of India (EDI), Gujarat, and KLS IMER have signed an MOU to establish a Project Guidance Centre for Diploma in Entrepreneurship & Business Management (DEBM). Students of IMER will have the benefit of getting a EDI DEBM besides the MBA degree.



IIT Madras

Centre for social innovation and entrepreneurship at IIT - Madras and KLS IMER have signed an MOU to collaborate on activities related to academics, research and consultancy including the activities such as: modular certification courses, conferences, B - plan competitions, consultancy for establishment and hand holding of an incubator.

Certification Programs

KLS IMER offers value added certification programs to impart additional skills there by enhance employability and corporate acceptability. Certification Programs like digital marketing in association with IIM Kolkata, financial literacy with Karvy financials, MS Excel are offered.

KLS IMER is recognized as IN CAMPUS CENTER OF EXCELLENCE by Confederation of Indian Industry- Institute of Logistics, Chennai. KLS IMER has entered into a Memorandum of Agreement with CII-IL education wing of CII to offer certification program in Logistics and Supply Chain Management to interested MBA students.

Certification in Business Analytics with IIM, Bangalore

KLS IMER offers an online certification course in **Predictive Analytics** in association with IIM, Bangalore using Massive Open Online Courses (MOOCs) platform to improve quality and scale of education to quality & skill of education using Internet and mobile technology.

Student Life at IMER

Student life at IMER is happening, packed with classes, projects, events and various activities. Our extra-curricular activities are designed to stimulate the students to learn, excel and grow. We are committed to create a different ambience for better learning and development. National & International tours, Industrial visits, Creative events, exposure of students to consultancy & training assignments are our hallmark.

Outbound Training Program

This program comprises of outbound assignments. Participants are made to go through various outdoor activities where they will be required to face challenging situations as individuals and teams. This will help them see the importance of communication, leadership, teamwork, planning and delegation. This acts as a best platform for personality development, confidence and team building.



Spirit

To induce competitive spirit amongst students & provide them an avenue for holistic development, IMER organises an annual sports event SPIRIT. It includes

Individual Events : Athletics, Table tennis, Badminton, Carrom, Chess.

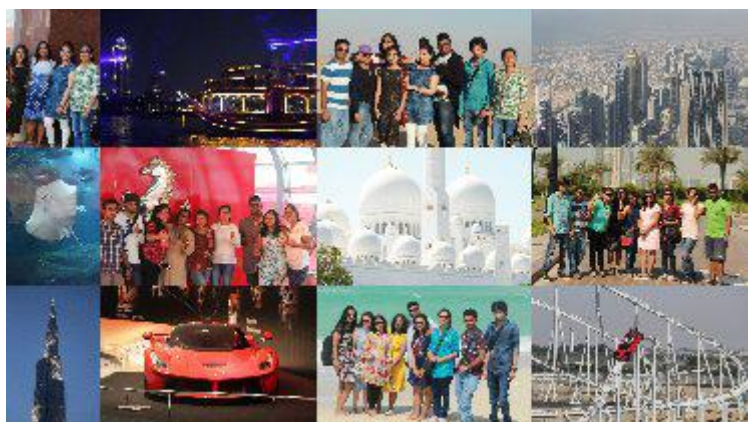
Team Events : Cricket, Football, Volleyball, Throw ball, Kabaddi, & Lagori.



Advanced Learning : Our students harness the power of software & apps to improve the learning experience.



Clubs @ IMER



International Tour



National Tour

IMER Community Service

We try to develop our students as good citizens with a sense of social responsibility. In this direction we conduct several community outreach programs like blood donation camp, news paper donation, tree plantation, voting awareness, etc.



Blood Donation Camp



Tree Plantation



News Paper Donation

Internship (Project Work)

All the students are required to undertake an Internship study on a specific topic for a duration of 60 days during the course. The internship should have Industry orientation and the work should be certified by the concerned organization where the student has undertaken the internship. The report of this internship study should be submitted by the students as per the guidelines prescribed by the university. This study will commence after the completion of II semester and before the start III semester.

Research and Publications



Research Centre

IMER has the unique distinction of being accorded a post graduate research centre outside the University campus in the RCU system. Our faculty will be able to guide scholars toward PhDs, and seek funding for research from various nodal bodies. 4 of our faculty are eligible for guideship. The Institute has been able to undertake various research assignments and consultancy projects from local and surrounding Industries. 4 research scholars have registered for doctoral studies at IMER.



TATVA

(ISSN NO. 0973-0974) is a journal and forum of discussion of contemporary issues in management. It carries articles, research papers, book reviews and case studies. It is a peer reviewed journal and is in its fourteenth year of publication. It is circulated amongst top B-schools all over India, our alumni and practitioners in corporate India.



Newsletter

KLS IMER Happenings - showcases events and enhancements at the B-School on the move. As KLS IMER moves to instill, in its operating DNA, a focus on issues and matters beyond the typical syllabus, every issue of the newsletter highlights activities undertaken for every four months in the year.

Speakers @ IMER

Exposure to ideas & personalities regularly

Industry Interaction Series (III Series) is the special endeavor of KLS IMER family, it believes in spreading the worldly knowledge beyond MBA program to our students. III series is aimed at bringing successful people from diverse fields such as business, education, music, artists representing many forms of fine arts, to share their experiences with the students. The III series stage is open for experts and thought leaders, who are keen to share their knowledge in their area of expertise with our students. Some of the renowned speakers who recently visited us are:

- **“Impact of Foreign Direct Investment on Indian Economy”** by **Dr. Basavaraj Kudachimath**, Associate Professor, Department of Management Studies, VTU, Belagavi.
- **“National Entrepreneurship”** by **Prof. Satyajit Majumdar**, Faculty, TISS, Mumbai.
- **“Achievement Motivation”** by **Yashaswi Nag**, Faculty, EDI, Gujarat.
- **“Entrepreneurial success”** by **Mr. Balepur Bhagvan**, Faculty, EDI, Gujarat.
- **“Investor Awareness Program”** by **Mr. Himanshu Mohta**, Regional Trainer, Regional Trainer, Reliance Mutual Fund, Belagavi.
- **“Charm of Entrepreneurship”** **Shri. Suhas Gopinath**, Founder CEO, Globals Inc., Bangalore and awardee of Incredible Europe (Austria) and Karnataka State's Rajyotsava Award.
- **“Principles of and Practices for Teaching-Learning-Evaluation Excellence”** by renowned academic stalwart **Prof. L.S. Ganesh**, Professor, Department of Management Studies, IIT, Madras.
- **“Family business in India”** by **Mr. Boman Moradian**, guest faculty at Bajaj Management School, SP Jain institute, & independent Director at Essel Propack Ltd.
- **“Goods and Service Tax (GST)”** by **Shri. S. Mirza Azamatulla**, Joint Commissioner of Commercial Tax (Admin) and his team consisting of **Shri. B. Nagaraj Rao**, Deputy Commissioner and **Shri. C.M. Lokare**, Assistant Commissioner.
- **“Negotiation skills”** by **Prof. Samish Dalal**, Associate Professor S.P. Jain School of Global Management, Mumbai.
- **“Know your Heart” “Healthy Spine”** respectively by **Dr. Prabhu Halkatti**, & **Dr. K. S. Mane**, Lakeview Heart & Super Speciality Hospital, Belagavi.
- **“Recent HR Practices and HR Developments”** by **Shri. Vijay Kanbur**, eminent HR professional from Trimax IT Services, Mumbai.
- **“Risk in Banking and Derivatives”** by **Shri R. Raghavan**, Retd. Banker.
- **“Innovative Pedagogical Methods in Management using Rubik Cubes”** by **Dr. C Prashantha**, Professor & Research head, Department of Management, SDM College, Dharwar.

Training and Placement Cell

Training @ IMER : We at IMER have developed a comprehensive training calendar for our students, these training programs allow our students to strengthen their skills to increase knowledge and achieve high level of competence for future job market. We conduct the student profiling activity for incoming student body. To assess the level of knowledge, skill and ability of students in terms of general knowledge, aptitude, communication skills and basic computer skills. The profiling result provides input for understanding the training needs of incoming students.



English Proficiency Certification Training :

We train students on English proficiency, this training program is designed and delivered by STEP a division of The Hindu Group. It is a unique, adaptive and adaptable testing and learning platform designed to meet every English language testing and learning need in India with a high degree of accuracy and effectiveness. STEP eliminates cultural bias and is benchmarked with international standards based on outcomes of extensive research. The STEP scale is modeled against the CEFR scale (Common European Framework of Reference) just like other international English language assessments. On successful completion of assignments and assessment test students are awarded STEP Certification.



FLIP Certification Program :

Initiative Learning India Pvt. Ltd., (FLIP) is a leading e-learning and certification provider in India by practitioners who are IIM Alumni with years of BFS experience, the certification will endow students with immense knowledge to be utilized in the field of Banking and Finance. Industry specific FLIP certifications are endorsed by leading banks and Financial Institutions across India.

Key Recruiters





Dr. Shashidhar G. Chiniwar

Karnatak Law Society to which KLS IMER belongs was established in 1939 by the eminent lawyers of Karnataka. The Society has been rendering yeomen services in the sphere of professional education in this part of our country. We are a premier institute well known throughout India for imparting quality management education since 1991. Our dedicated and well experienced faculty with industry background; a state-of-the-art infrastructure and a robust industry institute interface are the salient features of KLS IMER.

KLS IMER strongly believes in achieving excellence at all fronts, namely; academics, research, consultancy, placements, social outreach and overall grooming of its students. The activities at the institute are steered at creating ample opportunities for students. Such opportunities allow the students to determine, discover and learn beyond the territory of the curriculum, the class room & the campus. We constantly encourage students to take up live projects/assignments/internships which will help them broaden their horizons; improve & augment their thought process and grow as professionals. KLS IMER is a student driven and student centric Institution where-in all the decisions are taken keeping welfare of the students in mind. Our strong alumni base of 2000 plus, who have created their own identity in their respective domains, is a testimony to this fact.

We at KLS IMER strongly believe in creating conducive learning environment for students so that on completion of their MBA course they have abundant knowledge, huge pack of skills and the right attitude with them. This is the reason we involve students in various activities like out bound training, soft skill development workshops, industrial visits, interaction with the people from industry, management events, pre-placements training, etc., and groom them with required KSAs (Knowledge, Skills and Attitude) so that they are ready to face the challenges of the corporate world or their own enterprises.

I take this opportunity to welcome you to KLS IMER campus, so that you can have a first-hand feel of our state of art infrastructure, experienced and dedicated faculty, and most importantly the conducive learning environment.

Happy Learning!

GENERAL MANAGEMENT, BUSINESS RESEARCH AND ANALYTICS



Dr. Poornima M. Charanthimath
B.E., M.Sc (UK), Ph.D



Ms. Deepa D. Saibannavar
B.E., M.tech (CSE)

MARKETING



Dr. Shashidhar G. Chiniwar
B.Tech, MBA, Ph.D



Mr. Shreekant G. Naik
B.Pharmacy, PGDM, M.Com



Mr. Ajay Jamnani
B.Sc., MBA, NET, KSET

HUMAN RESOURCE MANAGEMENT



Dr. Kirti Shivakumar
MA, MHRM, Ph.D



Ms. Shailaja G. Hiremath
MBA, NET, KSET



Mr. Sanjay K Deshpande
B.Sc (Agri), MBA, EDP, NET

FINANCE



Dr. Arif H. Shaikh
M.Com, MBA, M.Phil, Ph.D



Mr. B. K. Deshmukh
B.E., MBA



Mr. Shrirang A. Deshpande
B.Com., MBA



Mr. Rahul Mailcontractor
B.E., MBA



Ms. Prajakta P. Jadhav
B.Com., MBA, M.Com, PGDM

PLACEMENTS, SPORTS, & ALUMNI RELATIONS



Mr. Ignesh Sakri
B.Com., M.Com.
Training & Placement Officer



Mr. Basavaraj A. Kumasi
B.Com, M.PEd (K-SET), PGD (Yoga)
Physical Education Director



Mr. Ameet Kulkarni
BBA, MBA
Faculty & Alumni Coordinator

Special Student Service

ON CAMPUS STUDENT COUNSELOR

Ms. Vaishali Bhatkhande

B.Sc, (Child Development),
SNDT University

P G Diploma in Education of the
Physically Handicapped,
Mumbai University

P G Diploma in Adolescent
Psychology and Counseling,
Pune University



Hostel

A safe & well equipped on campus hostel facility for girls with clean, student friendly amenities.



KLS IMER - Eco-friendly Campus

Roof Top Solar Project (70kwp)



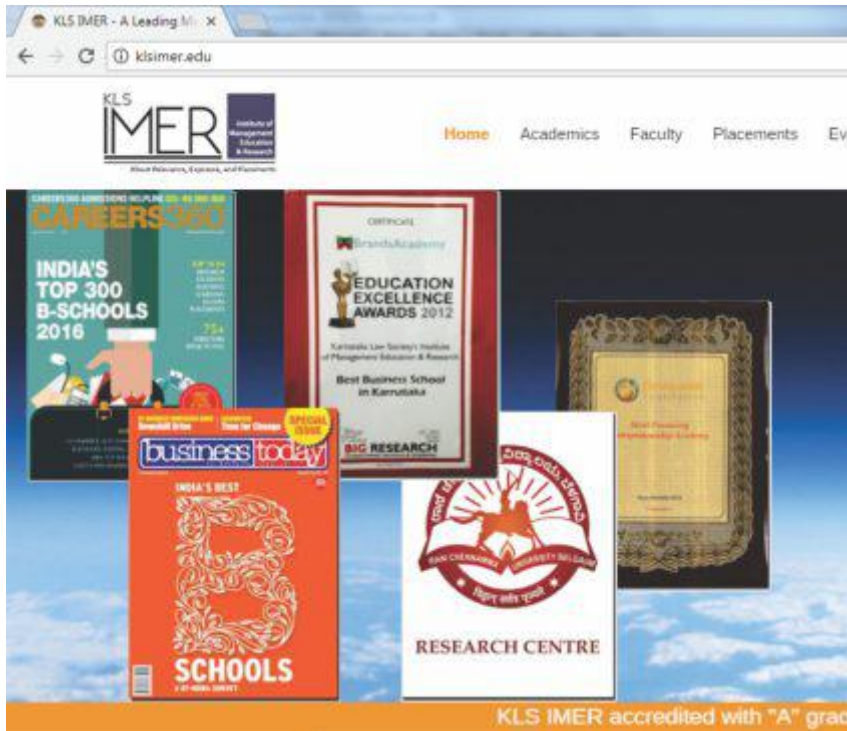
Waste Management



Rain Water Harvesting



Our Virtual Presence



Visit klsimer.edu to learn more about us.



Visit our Facebook Page

Admission & Selection Criteria

All applicants are required to submit a completed IMER application form (attached to this prospectus), with required testimonials (attested degree certificate, marks sheets, score cards etc). All applicants must meet the following admission criteria.

Govt. Quota

- Graduation from any recognised university with at least 50% (SC/ST 45%)
- If the applicant has completed his/her graduation course from other than Rani Channamma University, Belagavi, he/she must produce eligibility certificate from Rani Channamma University and Migration Certificate from the University of his/her graduation.
- Must appear for Post Graduate Common Entrance Test (PGCET) conducted by the Government of Karnataka.

Management Quota

- Graduation from any recognised university with at least 50% (SC/ST 45%)
- If the applicant has completed his/her graduation course from other than Rani Channamma University, Belagavi, he/she must produce eligibility certificate from Rani Channamma University and Migration Certificate from the University of his/her graduation.
- Must appear for Post Graduate Common Entrance Test (PGCET) conducted by the Government of Karnataka or MAT/CAT/XAT/KMAT or any other entrance test recognised by AICTE, New Delhi.

MBA - Course Structure

I Semester

- Business Data Analysis
- Corporate Communications
- Entrepreneurship Development
- Fundamentals of Management & Human Resources
- Fundamentals of Marketing
- Management Accounting
- Managerial Economics
- Soft skills

II Semester

- Business Research Methods
- Macro Business Environment
- Organization Behavior & Advanced Human Resources Management
- Operation Management
- Technology Skill
- Open Elective Course
- Internship Project

III Semester

- Strategic Management
- Total Quality Management
- Employability Skills

IV Semester

- Management Control System
- Project Work (Activity Based Learning)
- Studies in Indian Values and Management

Specialisation

	Finance	Marketing	Human Resource	Advance Business Management
II Semester	<ul style="list-style-type: none"> ▪ Advanced Cost management ▪ Corporate Finance ▪ Social banking & micro finance 	<ul style="list-style-type: none"> ▪ Consumer Behavior ▪ Sales Management ▪ Service Marketing 	<ul style="list-style-type: none"> ▪ Learning and Development ▪ Strategic Human Resources Management ▪ Talent Management 	<ul style="list-style-type: none"> ▪ Hospitality Management ▪ Operations Research ▪ Managing Micro Small & Medium enterprises ▪ New Venture Creation
III Semester	<ul style="list-style-type: none"> ▪ Banking Management ▪ Derivatives markets ▪ Financial markets & institutions ▪ Foreign Exchange Market ▪ Investment Analysis & Portfolio Management ▪ Investment Risk Management & Financial Ethics ▪ Tax Planning & Management-I 	<ul style="list-style-type: none"> ▪ Advertising Management ▪ International Marketing Management ▪ Retailing Management ▪ Strategic Brand Management ▪ Course Related Marketing ▪ Distribution & Logistic Management ▪ Legal Aspects of Marketing ▪ Strategic Marketing Management ▪ Open Elective Course 	<ul style="list-style-type: none"> ▪ Employee Engagement & Interpersonal Effectiveness ▪ Global Human Resources Management ▪ Industrial & employee Relations ▪ Knowledge Management & Human Resources and Information System ▪ Organization design & Development ▪ Performance Management System. 	<ul style="list-style-type: none"> ▪ Family Business Management ▪ Nurturing Business Venture ▪ Productivity management ▪ Advanced Hospitality management ▪ Agri-Business Management ▪ Health-Care management ▪ NGO management ▪ Social Entrepreneurship
IV Semester	<ul style="list-style-type: none"> ▪ Corporate Financial Restructuring ▪ Insurance Management ▪ International Financial Management ▪ Management of Mutual Funds ▪ Merchant Banking & Financial Services ▪ Tax Planning & Management 	<ul style="list-style-type: none"> ▪ Business to business Marketing ▪ E- Marketing ▪ Rural Marketing ▪ Agricultural Product Marketing ▪ Customer Relationship Management ▪ Event Marketing and Management 	<ul style="list-style-type: none"> ▪ Change Management & Leadership ▪ Compensation Management ▪ Counselling and stress Management ▪ Competency Mapping ▪ Contemporary Development in HRM ▪ Human Resources Analytics 	<ul style="list-style-type: none"> ▪ Innovation and technology Management ▪ Supply Chain Management ▪ Enterprise Resource Planning ▪ Managing Business Growth ▪ Tourism and Travel management ▪ Value Analysis and Management

The 2-year MBA Program is divided into four semesters of 16 weeks each.

**KLS
IMER**

KARNATAK LAW SOCIETY'S
INSTITUTE OF MANAGEMENT EDUCATION AND RESEARCH



ವ್ಯವಸ್ಥಾಪನಾ ಶಿಕ್ಷಣ ಮತ್ತು ಸಂಶೋಧನಾ ಸಂಸ್ಥೆ

KARNATAK LAW SOCIETY'S
INSTITUTE OF MANAGEMENT EDUCATION AND RESEARCH
BELGAUM

KARNATAK LAW SOCIETY'S

INSTITUTE OF MANAGEMENT EDUCATION AND RESEARCH

(Affiliated to Rani Channamma University, Belagavi & Recognised by AICTE, New Delhi) Accredited by NAAC with grade "A"

77, Vadagaon Road, Adarsh Nagar, Hindwadi, Belagavi - 590 011

Ph : 0831 - 240 5511 /12/13/14/15, Fax : 0831 - 248 1745, Mob : +91 968 618 9088

Email : director@klsimer.edu Web : www.klsimer.edu



**KLS
IMER**