



KARNATAK LAW SOCIETY'S
**INSTITUTE OF MANAGEMENT
EDUCATION AND RESEARCH**



(Affiliated to Rani Channamma University, Belagavi & Recognised by AICTE, New Delhi)

Accredited by NAAC with grade "A"

PROSPECTUS



About Relevance, Exposure, and Placements ... since 1991

ABOUT KARNATAK LAW SOCIETY, BELAGAVI



Karnatak Law Society, founded by eminent lawyers of Karnataka in 1939, has been rendering a yeoman service in the sphere of professional education in this part of the country. It has the distinction of running colleges in the fields of Law, Commerce, Engineering and Management Education. All its Institutions have earned reputation as 'lead colleges' in Karnataka. Starting with Law College in November, 1939, the Society has expanded its educational activities to Commerce, Management and Technology. The Board of Management consists of group of quality conscious professionals comprising lawyers, doctors, engineers, chartered accountants and entrepreneurs.

KLS Institutions

- Raja Lakhamgouda (RL) Law College.
- Gogte College of Commerce (GCC).
- Gogte Institute of Technology (GIT).
- Institute of Management Education and Research (IMER).
- Vasanttrao Potdar Polytechnic.
- KLS GCC Bachelor of Business Administration.
- KLS Gogte Pre-University College of Science.
- KLS GCC Bachelor of Computer Application.
- KLS English Medium School.
- Viswanathrao Deshpande Rural Institute of Technology (VDRIT), Haliyal
- KLS Pre-University College, Haliyal
- KLS GCC Master of Commerce.
- KLS BCA College, Haliyal
- KLS Public School.

KLS Management

President

Shri. Anant N. Mandgi, Advocate

Chairman

Shri. M. R. Kulkarni

Vice - Presidents

Dr. V. V. Huilgol, ENT Specialist
Shri. R. B. Bhandare, Industrialist

Secretaries

Shri. A. K. Tagare
Shri. P. G. Badkundri

Members

Shri. V. G. Badkundri

Shri. S. G. Shirgurkar

Shri. S. G. Adhyapak

Shri. S. V. Ganachari

Shri. S. M. Kulkarni

Shri. V. M. Deshpande

Shri. Rajendra Belgaumkar

Smt. Ujwala Mandgi

Shri. S. G. Punekar

Shri. P. G. Badkundri

Shri. S. P. Joshi

Shri. Ashok A Kulkarni

Shri. A. G. Kulkarni

Shri. U. N. Kalkundrikar

Shri. P. S. Kulkarni

Shri. Vivek G Kulkarni

Shri. D. V. Kulkarni

Shri. Pramod Kathavi

Shri. Atul K Alur

Shri. Vinayak Lokur

Shri. P. S. Sawkar

Shri. R. S. Mutalik (Desai)

Dr. M. D. Dixit

About KLS IMER

Karnatak Law Society's, Institute of Management Education and Research (IMER) started its journey in 1991. IMER offers a 2 years full time degree in Master of Business Administration (MBA), affiliated to Rani Channamma University (RCU), Belagavi, and is recognized by AICTE, Ministry of Human Resources Development, New Delhi.

The beautiful IMER campus bustles with students making the most of spacious classrooms, specialization zones, a well stacked library, computer lab, reading room, digital library and an excellent auditorium.

IMER is an Institute with a difference where students learn to apply the science of business to the art of management.

- IMER has been accredited by NAAC with grade "A".
- It has been bestowed with A++ by Business India and Dalal Street Finance Journal consecutively for 3 years.
- It has been awarded with the best B-School award in Karnataka by Brands Academy, New Delhi.
- It has been recognised among "Top Institutes of India" by Competition Success Review (CSR).

Vision

To excel in Management Education, Research, Consultancy, Industry Institute Interface and Alumni Relations.

Mission

To transform every student into an industry ready and motivated business leader with an entrepreneurial mindset.

Values

Integrity
Commitment
Passion

Quality Policy

To continually improve processes of admission, teaching, learning, examination, evaluation, placement, alumni relations, research and extension in order to become an industry friendly Institution of academic excellence.

KLS IMER Governing Council



Shri. Rajendra Belgaumkar
Chairman GC



Shri. Ram Bhandare
Member GC



Shri. P. G. Badkundri
Member GC



Shri. V. M. Deshpande
Member GC



Shri. Pramod Kathavi
Member GC



Dr. M. D. Dixit
Invitee Member GC



Shri. S. V. Ganachari
Invitee Member GC



Dr. S. G. Chiniwar
Director & Ex-Officio Secretary

IMPRESSIVE INFRASTRUCTURE



Meaningful education, the IMER way

IMER firmly believes that meaningful education is the outcome of learning and doing in combination. Students at IMER go through an intense program that packs in a total of 50 hours per week that include 25 hours of classroom teaching, 8 hours of lab work, 15 hours of project work and 2 hours of industry exposure.

Nurturing the individual

Effective managers are born out of strong individuals. Hence, at IMER we first nurture the individual by building confidence, enhancing communication skills, developing quick thinking skills and promoting decision-making abilities.

Teamwork & Leadership

At IMER, we strongly believe that leadership and teamwork are interdependent. Our students take on both the roles. Outbound programs are an integral part of our effort.

Exposure to creative thinking

We expose students to active management gurus from various industries and sectors. Students assimilate diverse experiences and translate them into creative and inclusive solutions.

Innovative Pedagogy

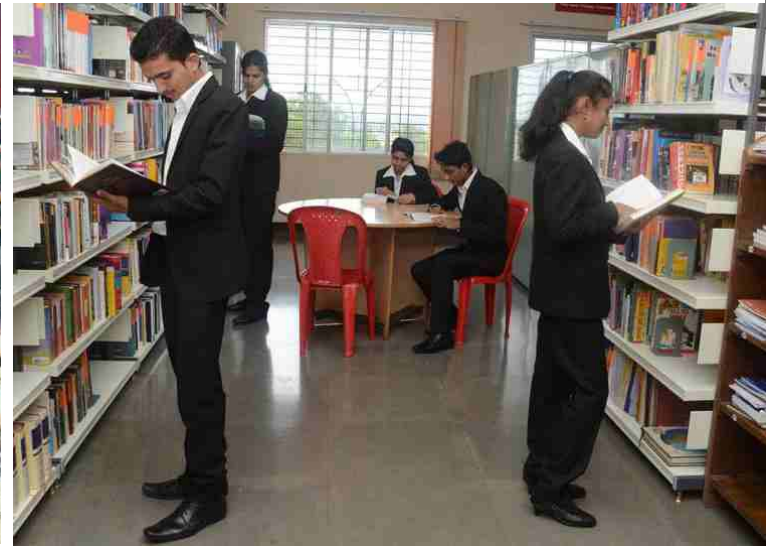
The learning environment combines various innovative teaching methods. The rat-race for marks through bookish knowledge just does not exist at IMER. Practical knowledge and creative applications are reinforced as means to succeed.

Challenge aplenty

Simulation of the dynamic national scenarios of business & management on one hand, and exposure to the international business environment on the other, give total insights useful to grow as a professional. A curriculum spruced with projects inculcates the art of strategic thinking in students.



... INFRASTRUCTURE



Integrated learning experience

Our spacious campus is situated conveniently in the city, creating a perfect ambience for the students to utilize well planned resources available at IMER. All these resources combined are created to cater to the learning requirements of the students and help them to improve their efficiency and competencies.

Classrooms

The venue for interactions, presentations, thought provoking & brainstorming sessions, these rooms are equipped with hi-tech support equipment.

LCD Projectors Computers
AV systems Video lecture capture system

Library

IMER Library is an invaluable resource for students, researchers and faculties of business and management. The library has a robust collection of over 17500 books, 7500 titles, 120 current subscriptions to journals and magazines, newspapers, and many other resources like thesis, project reports of students, CDs/DVDs, NPTEL course materials, back issues of journals. The library, spread over 375 Square Meters, also provides access to the best digital resources to various databases like Capitaline, EBSCO & j-Gate company of e-journals. It provides access to more than 22,000 online full text/abstracts to journals, Company profiles etc. The functions and services of the library are fully automated. Hubs for discussion have been created for exchange of ideas, group discussions and other such activities that lead to healthy interactions. A coffee machine has also been provided in this area to foster discussions and interesting debates.

Business Incubation Centre - From theory to practice at KLS IMER



... INFRASTRUCTURE



Auditorium

Our large, air-conditioned & acoustically designed auditorium is the venue for all our discourses, seminars, conferences, presentation and other events. It accommodates 300 people and is a constantly alive with cultural, educational and recreational activities for and of our students.



Workshop hall

This hall hosts a number of events, meetings, press meets, corporate meets and faculty discussions. This hall is used for smaller group interactions and well suited for interactive presentations.



The *cafeteria* @ IMER - Provides food for thought as well as the platter.

FITNESS FOR BODY & MIND



Our fitness centre is well equipped with modern exercise equipment and is operated under the watchful eyes of physical education director. Besides we have facilities for indoor games like table tennis, chess, carrom board and an outdoor volleyball court. Yoga sessions are conducted on & off campus too.



Hostel

A safe & well equipped on campus hostel facility for girls with clean, student friendly amenities.



Transportation

Students can avail our transport facility to and from home, for Industrial visits, field projects, placement drives & the Institute.

OUR FLAGSHIP EVENTS



Samagam

Youth & innovation. Youth & creativity, Youth & leadership these are the underlying messages of SAMAGAM - the festival of creativity & innovation for undergraduates. Samagam means coming together, It gives an opportunity for the students to work in teams, laugh & cry together, face joy & reaction, learning to plan, organise & create.

Superlative Internship Project

Every year we conduct a Superlative Internship Project (SIP Contest) to enable students to showcase their Internship projects. The competition is open to students from MBA colleges all over the state. The top 3 projects are awarded with an attractive cash prize and a certificate.



Aarambh

Aarambh is an orientation program for newly admitted MBA students. Shri. Jayant Humbarwadi, Joint Managing Director, Ashok Iron Group, Belagavi was the Chief Guest for Aarambh 2016. This is platform for common learning and understand that they come from diverse backgrounds-both educational and socio-cultural.

Foundation Day

KLS IMER celebrated its 26th Foundation Day on 16th September 2016, which coincided with the 100th Birth Anniversary of Late Shri. Raosaheb Gogte, a patron of Karnatak Law Society. Chief Guest Shri. R. V. Deshpande, Patron, Karnatak Law Society and Minister for Large and Medium Industries and Infrastructure Development, Government of Karnataka. Shri. Vijay Pusalkar Founder and Chairman, Indo Schottle Auto Parts Private Limited was felicitated during the occasion.



The IMER advantage

Tie-ups with World Class Organisations



IIT Madras

Centre for social innovation and entrepreneurship at IIT - Madras and KLS IMER have signed an MOU to collaborate on activities related to academics, research and consultancy including the activities such as: modular certification courses, conferences, B-plan competitions, consultancy for establishment and hand holding of an incubator.

TiE (The Indus Entrepreneurs)

As an institutional member of TiE Hubli, IMER organizes TiE connect programs, My Story sessions, conclaves etc. for the local entrepreneurs, students and academicians to foster entrepreneurial culture amongst them and to create entrepreneurial environment in the region.

EDI, Ahmedabad

Entrepreneurship Development Institute of India (EDI), Gujarat, and KLS IMER have signed an MOU to establish a Project Guidance Centre for Diploma in Entrepreneurship & Business Management (DEBM). Students of IMER will have the benefit of getting a EDI DEBM besides the MBA degree.

Certification Programs

KLS IMER offers value added certification programs to impart additional skills there by enhance employability and corporate acceptability. Certification Programs like digital marketing in association with IIM Kolkata, financial literacy with Karvy financials, MS Excel are offered.

KLS IMER is recognized as IN CAMPUS CENTER OF EXCELLENCE by Confederation of Indian Industry- Institute of Logistics, Chennai. KLS IMER has entered into a Memorandum of Agreement with CII-IL education wing of CII to offer certification program in Logistics and Supply Chain Management to interested MBA students.



Student Life at IMER

Student life at IMER is happening, packed with classes, projects, events and various activities. Our extra-curricular activities are designed to stimulate the students to learn, excel and grow. We are committed to create a different ambience for better learning and development. National & International tours, Industrial visits, Creative events, exposure of students to consultancy & training assignments are our hallmark.

Outbound Training Program

This program comprises of outbound assignments. Participants are made to go through various outdoor activities where they will be required to face challenging situations as individuals and teams. This will help them see the importance of communication, leadership, teamwork, planning and delegation. This acts as best a platform for personality development, confidence and team building.

Spirit To induce competitive spirit amongst students & provide them an avenue for holistic development, IMER organises an annual sports event SPIRIT. It includes

Individual Events

Athletics
Table tennis
Badminton
Carrrom
Chess

Team Events

Cricket
Football
Volleyball
Throw ball
Kabaddi , & Lagori.

STUDENT PROFILING

KLS IMER conducts the student profiling activity of its incoming student body. Its aim is to assess the level of knowledge, skill and ability of students in terms of general knowledge, aptitude, communication skills and basic computer skills at the beginning of the MBA course. The profiling result provides input for understanding the training needs of students.

The concept of English immersion classes has been introduced for the students. We have appointed eminent English teachers to conduct English immersion classes on a daily basis. These classes are offered at no extra cost to our students.



National Tour to Wagah Border



Outbound Training



Sports Event



International Tour : Our students visited Dubai & Abu Dhabi in March 2017

IMER Community Service

We try to develop our students as good citizens with a sense of social responsibility. In this direction we conduct several community outreach programs like blood donation camp, tree planting, sapling distribution, voting awareness, etc.



Blood Donation Camp 2016

Internship (Project Work)

All the students are required to undertake an Internship study on a specific topic for a duration of 60 days during the course. The internship should have Industry orientation and the work should be certified by the concerned organization where the student has undertaken the internship. The report of this internship study should be submitted by the students as per the guidelines prescribed by the university. This study will commence after the completion of II semester and before the start III semester.

Clubs @ IMER

Movie club

This club introduces good & moral based cinema(s) to our students to foster discussion among them to enable advanced learning of management concepts in an innovative way.

Reading club

This club strives to inculcate the apparently lost joy of reading among young Indian minds. Several interesting debates, discussion, post sessions are held. It has been a great tool for widening the vocabulary base among our students.

Yoga club

This club conducts sessions on yoga. Selected poses are properly displayed and taught to the student participants, so that they can practice these at home.

TRAINING AND PLACEMENT CELL

IMER has a dedicated centre for placement. Being a front-runner in the field of imparting professional management education in this part of the country, IMER also boasts an excellent track record of placements. Students graduating from this professionally driven Institute are today serving with great companies at top management positions across a gamut of industries viz. Banking, Manufacturing, Retail, FMCG, Telecommunications, IT, etc.

Pre-Placement Activity

Pre-Placement activities are given due importance, from day one of the MBA life of the student and the concept of mentoring each and every student is followed regularly at IMER. Students are trained in:

1. Interviews
2. Group discussions.
3. Professional resume writing.
4. Aptitude tests.
5. Soft skills.
6. Internships

Professionals from various industries visit the Institute and interact with students on regular basis and guide them in accordance with the industry norms and standards. The Institute has tie-up with professional training and development centres and individuals to carry out the pre placement activities in a stringent and result oriented methodology.

Alumni Network

The alumni network of the institute is one of the strategic sources in getting successful placements done for the students graduating from us even today. And the companies where in our alumni are working are extremely happy to visit the Institute every year to pick fresh management brains for the highly competitive environment and also rely on the chunk of talent for their human resource requirement from IMER. We meet the alumni regularly in our alumni meet called called Samhita.

Emphasis on Career than Job

The placement cell of the Institute is aptly set up, not only to get a right job, but guide each student to get into the right career. The process of personal attention and holding is a norm and is followed at every aspect of the MBA life of a student, which has resulted in the students achieving laurels in the profession they have chosen.

Key Recruiters



RESEARCH AND PUBLICATIONS



Research Centre

IMER has the unique distinction of being accorded a post graduate research centre outside the University campus in the RCU system. Our faculty will be able to guide scholars toward PhDs, and seek funding for research from various nodal bodies. 4 of our faculty are eligible for guideship. The Institute has been able to undertake various research assignments and consultancy projects from local and surrounding Industries. 4 research scholars have registered for doctoral studies at IMER.

TATVA

(ISSN NO. 0973-0974) is a journal and forum of discussion of contemporary issues in management. It carries articles, research papers, book reviews and case studies. It is a peer reviewed journal and is in its eleventh year of publication. It is circulated amongst top B-schools all over India, our alumni and practitioners in corporate India.

Newsletter

KLS IMER Happenings - showcases events and enhancements at the B-School on the move. As KLS IMER moves to instill, in its operating DNA, a focus on issues and matters beyond the typical syllabus, every issue of the newsletter highlights activities undertaken for every four months in the year.

Speakers @ IMER

Exposure to ideas & personalities regularly

Industry Interaction Series (III Series) is the special endeavor of KLS IMER family, it believes in spreading the worldly knowledge beyond MBA program to our students. III series is aimed at bringing successful people from diverse fields such as business, education, music, artists representing many forms of fine arts, to share their experiences with the students. The III series stage is open for experts and thought leaders, who are keen to share their knowledge in their area of expertise with our students. Some of the renowned speakers who recently visited us are:

- Entrepreneurship in India - **Mr. Nagaraj Prakasam**, Mentor/Angel Investor - Indian Angel Network
- Country Analysis - **Mr. Mohan Phadke**, Management consultant.
- Influencing and Negotiation Skills - **Mr. Chandil Kumar**, Corporate Trainer & Visiting Faculty, IIM-B
- Government of Karnataka Schemes - **Mr. Siddanna**, Jt. Director, DIC Belagavi.
- Investments for the Long Run - **Mr. Alpesh Jain**, Regional Head, Reliance Money, Belagavi.
- Digital Payment & Digital Transaction options - **Ms. Gayatri Bedekar**, Faculty KLS VPP
- '10X Thinking for your business growth' - **Mr. Phil Britten**, Entrepreneur and author from Australia
- Employability Quotient - **Prashant Mahiskar**, Senior Manager, Aurangabad Electrical Ltd.
- Skill & Employability - **Mr. Sham Kamat**, Corporate manager & legal consultant
- Expectation from the Industry - **Mr. Sumedh Gupte**, Regional head - Maharashtra & Gujarat, Business Standard Ltd.
- Spiritual Science of Yoga and Modern Day Life - **Mr. Nayeem Shaikh**,
- Professional yoga Trainer for MLRIC, Belagavi.
- Diabetes & Stress Management - **Dr. Neeta Deshpande**, Diabetologist & Bariatric Physician.
- Career Opportunities - **Air Commodore G. L. Hiremath** & **Lt. Colonel Niteen Rumale**
- Supply Chain Management - **Dr. Anandhi** & **Prof. Uma Maheshwari**, CII-IL

DIRECTOR'S MESSAGE



Dr. Shashidhar G. Chiniwar

Karnatak Law Society to which KLS IMER belongs was established in 1939 by the eminent lawyers of Karnataka. The Society has been rendering yeomen services in the sphere of professional education in this part of our country. We are a premier institute well known throughout India for imparting quality management education since 1991. Our dedicated and well experienced faculty with industry background; a state-of-the-art infrastructure and a robust industry institute interface are the salient features of KLS IMER.

KLS IMER strongly believes in achieving excellence at all fronts, namely; academics, research, consultancy, placements, social outreach and overall grooming of its students. The activities at the institute are steered at creating ample opportunities for students. Such opportunities allow the students to determine, discover and learn beyond the territory of the curriculum, the class room & the campus. We constantly encourage students to take up live projects/assignments/internships which will help them broaden their horizons; improve & augment their thought process and grow as professionals. KLS IMER is a student driven and student centric Institution where-in all the decisions are taken keeping welfare of the students in mind. Our strong alumni base of 1600 plus, who have created their own identity in their respective domains, is a testimony to this fact.

We at KLS IMER strongly believe in creating conducive learning environment for students so that on completion of their MBA course they have abundant knowledge, huge pack of skills and the right attitude with them. This is the reason we involve students in various activities like out bound training, soft skill development workshops, industrial visits, interaction with the people from industry, management events, pre-placements training, etc., and groom them with required KSAs (Knowledge, Skills and Attitude) so that they are ready to face the challenges of the corporate world or their own enterprises.

I take this opportunity to welcome you to KLS IMER campus, so that you can have a first-hand feel of our state of art infrastructure, experienced and dedicated faculty, and most importantly the conducive learning environment.

Happy Learning!

FACULTY

GENERAL MANAGEMENT, BUSINESS RESEARCH AND ANALYTICS



Dr. Purushottam Bung,
B.E., PGDM (AUS), MBA (AUS), Ph.D



Dr. Poornima M. Charanthimath
B.E., M.Sc (UK), Ph.D



Ms. Deepa D. Saibannavar
B.E., M.tech (CSE)

MARKETING



Dr. Shashidhar G. Chiniwar
B.Tech, MBA, Ph.D



Mr. Shreekant G. Naik
B.Pharmacy, PGDM, M.Com



Mr. Ajay Jamnani
B.Sc., MBA, NET

HUMAN RESOURCE MANAGEMENT



Dr. Kirti Shivakumar
MA, MHRM, Ph.D



Ms. Shailaja G. Hiremath
MBA, UGC NET, KSET,



Mr. Sanjay K Deshpande
B.Sc (Agri), MBA, EDI, NET

FACULTY

FINANCE



Dr. Arif H. Shaikh
M.Com, MBA, M.Phil, Ph.D



Mr. B. K. Deshmukh
B.E., MBA



Mr. Shirang A. Deshpande
B.Com., MBA



Mr. Rahul Mailcontractor
B.E., MBA



Ms. Prajakta P. Jadhav
B.Com., MBA

PLACEMENTS, SPORTS, & ALUMNI RELATIONS



Mr. Ignesh Sakri
B.Com., M.Com.
Training & Placement Officer



Mr. Basavaraj A. Kumasi
B.Com, M.P.Ed (K-SET), PGD (Yoga)
Physical Education Director



Mr. Ameet Kulkarni
BBA, MBA
Faculty & Alumni Coordinator

FACULTY

VISITING



Dr. Sushama Patnekar
MA (Eng), MA(French), Ph.d (French)



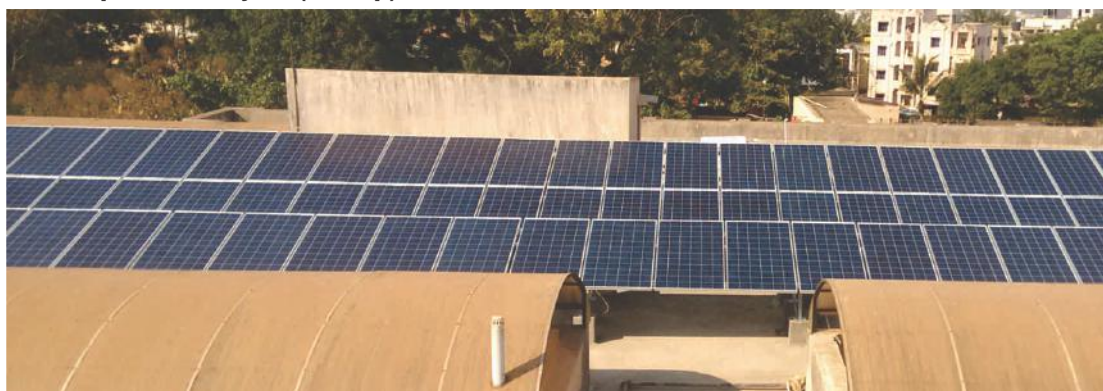
Ms. Faridah Saith
M.Sc (Psychology)



Ms. Leena Bhatkal
M.Com

KLS IMER - Eco-friendly Campus

Roof Top Solar Project (70kwp)



Waste Management



Rain Water Harvesting



Our Virtual Presence



Visit klsimer.edu to learn more about us.



Engage with us via F.B

Our students harness the power of software & apps to improve the learning experience.



contineo



COURSE STRUCTURE MBA - Master of Business Administration Program

I Semester	II Semester	III Semester	IV Semester
<ul style="list-style-type: none"> ▪ Business Data Analysis ▪ Corporate Communications ▪ Entrepreneurship Development ▪ Fundamentals of Management & Human Resources ▪ Fundamentals of Marketing ▪ Management Accounting ▪ Managerial Economics ▪ Soft skills 	<ul style="list-style-type: none"> ▪ Business Research Methods ▪ Macro Business Environment ▪ Organization Behavior & Advanced Human Resources Management ▪ Operation Management ▪ Technology Skill 	<ul style="list-style-type: none"> ▪ Strategic Management ▪ Total Quality Management ▪ Employability Skills 	<ul style="list-style-type: none"> ▪ Management Control System ▪ Project Work (Activity Based Learning) ▪ Studies in Indian Values and Management

SPECIALISATION

	Advance Business Management	Finance	Human Resource	Marketing
II Semester	<ul style="list-style-type: none"> ▪ Hospitality Management ▪ Operations Research ▪ Managing Micro Small & Medium enterprises ▪ New Venture Creation 	<ul style="list-style-type: none"> ▪ Advanced Cost management ▪ Corporate Finance ▪ Social banking & micro finance 	<ul style="list-style-type: none"> ▪ Learning and Development ▪ Strategic Human Resources Management ▪ Talent Management 	<ul style="list-style-type: none"> ▪ Consumer Behavior ▪ Sales Management ▪ Service Marketing ▪ Open Elective Course ▪ Internship Project
III Semester	<ul style="list-style-type: none"> ▪ Family Business Management ▪ Nurturing Business Venture ▪ Productivity management ▪ Advanced Hospitality management ▪ Agri-Business Management ▪ Health-Care management ▪ NGO management ▪ Social Entrepreneurship 	<ul style="list-style-type: none"> ▪ Banking Management ▪ Derivatives markets ▪ Financial markets & institutions ▪ Foreign Exchange Market ▪ Investment Analysis & Portfolio Management ▪ Investment Risk Management & Financial Ethics ▪ Tax Planning & Management-I 	<ul style="list-style-type: none"> ▪ Employee Engagement & Inter personal Effectiveness ▪ Global Human Resources Management ▪ Industrial & employee Relations ▪ Knowledge Management & Human Resources and Information System ▪ Organization design & Development ▪ Performance Management System. 	<ul style="list-style-type: none"> ▪ Advertising Management ▪ International Marketing Management ▪ Retailing Management ▪ Strategic Brand Management ▪ Course Related Marketing ▪ Distribution & Logistic Management ▪ Legal Aspects of Marketing ▪ Strategic Marketing Management ▪ Open Elective Course
IV Semester	<ul style="list-style-type: none"> ▪ Innovation and technology Management ▪ Supply Chain Management ▪ Enterprise Resource Planning ▪ Managing Business Growth ▪ Tourism and Travel management ▪ Value Analysis and Management 	<ul style="list-style-type: none"> ▪ Corporate Financial Restructuring ▪ Insurance Management ▪ International Financial Management ▪ Management of Mutual Funds ▪ Merchant Banking & Financial Services ▪ Tax Planning & Management 	<ul style="list-style-type: none"> ▪ Change Management & Leadership ▪ Compensation Management ▪ Counselling and stress Management ▪ Competency Mapping ▪ Contemporary Development in HRM ▪ Human Resources Analytics 	<ul style="list-style-type: none"> ▪ Business to business Marketing ▪ E- Marketing ▪ Rural Marketing ▪ Agricultural Product Marketing ▪ Customer Relationship Management ▪ Event Marketing and Management

The 2-year MBA Program is divided into four semesters of 16 weeks each.

ADMISSION & SELECTION CRITERIA

All applicants are required to submit a completed IMER application form (attached to this prospectus), with required testimonials (attested degree certificate, marks sheets, score cards etc). All applicants must meet the following admission criteria.

Govt. Quota

- Graduation from any recognised university with at least 50% (SC/ST 45%)
- If the application has completed his/her graduation course from other than Rani Channamma University, Belagavi, he/she must produce eligibility certificate from Rani Channamma University and Migration Certificate from the University of his/her graduation.
- Must appear for Post Graduate Common Entrance Test (PGCET) conducted by the Government of Karnataka.

Management Quota

- Graduation from any recognised university with at least 50% (SC/ST 45%)
- If the application has completed his/her graduation course from other than Rani Channamma University, Belagavi, he/she must produce eligibility certificate from Rani Channamma University and Migration Certificate from the University of his/her graduation.
- Must appear for Post Graduate Common Entrance Test (PGCET) conducted by the Government of Karnataka or MAT/CAT/XAT/KMAT or any other entrance test recognised by AICTE, New Delhi.

KARNATAK LAW SOCIETY'S

INSTITUTE OF MANAGEMENT EDUCATION AND RESEARCH

77, Vadagaon Road, Adarsh Nagar, Hindwadi, Belagavi - 590 011

Ph : 0831 - 240 5511 /12/13/14/15, Fax : 0831 - 248 1745, Mob : +91 968 618 9088

Email : director@klsimer.edu Web : www.klsimer.edu

