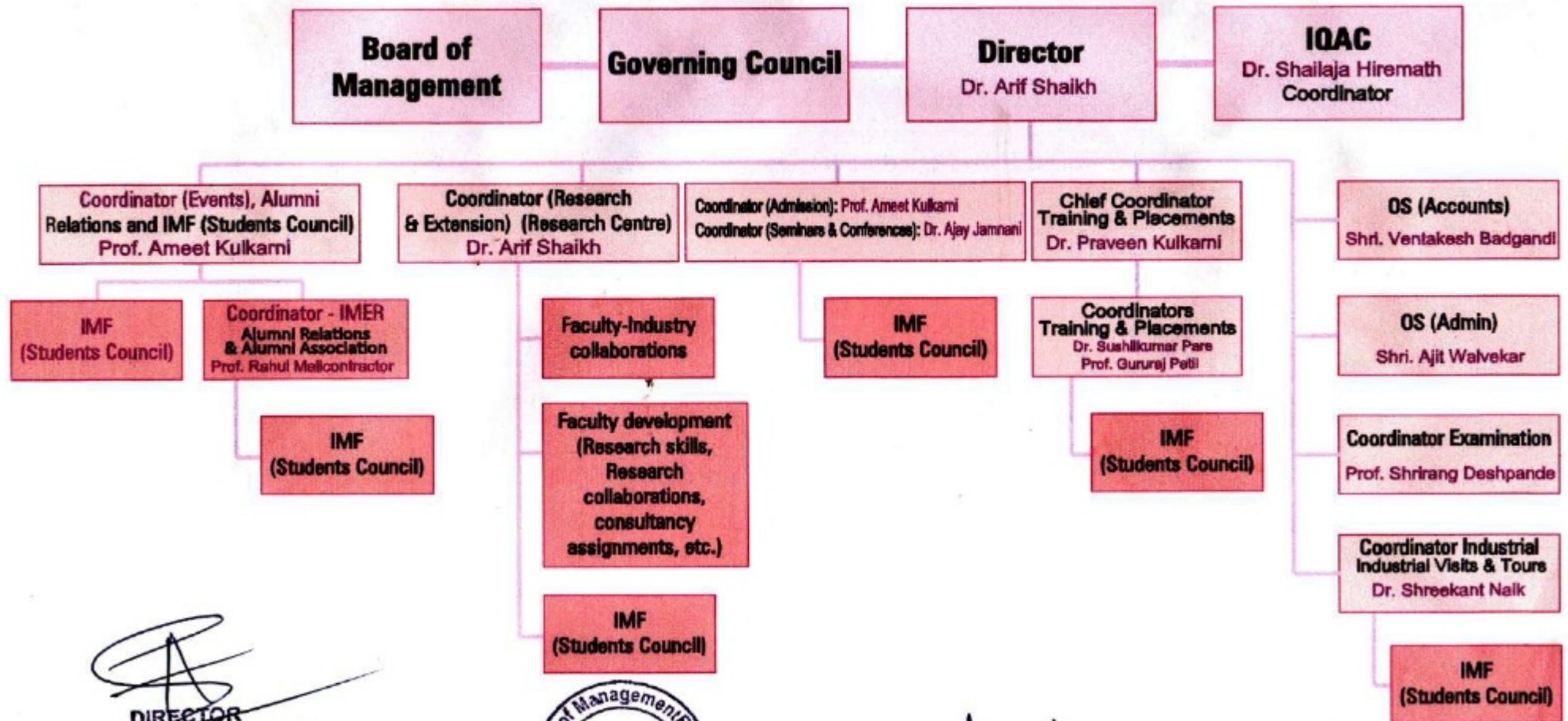


# KLS - IMER, Autonomous, Belagavi


4.4.2 There are established, Systems and Procedures for maintaining and utilizing Physical, academic & support facilities -classrooms, laboratory, library, sports complex, computers etc. (Institution's Policy with details of systems and procedures)

## Organization Chart



  
**DIRECTOR**  
 K.L.S. Institute of Management  
 Education & Research



  
 (A.B. Walvekar)  
 OS KLS IMER

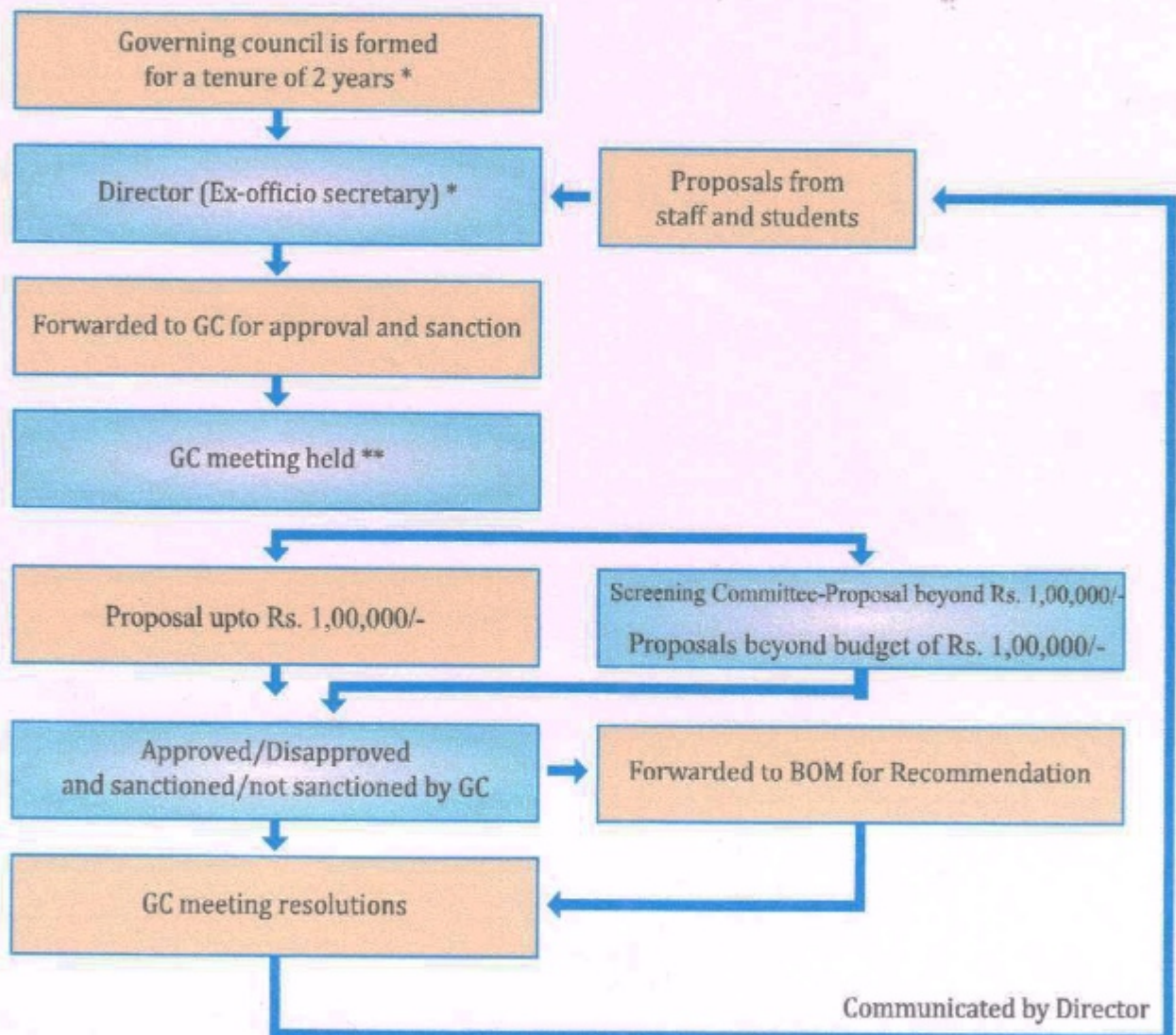
  
**CHAIRMAN**  
**GOVERNING COUNCIL**  
 K.L.S. I.M.E.R.



# KLS - IMER, Autonomous, Belagavi

4.4.2 There are established, Systems and Procedures for maintaining and utilizing Physical, academic & support facilities -classrooms, laboratory, library, sports complex, computers etc. (Institution's Policy with details of systems and procedures)

## Formation of GC and its role in Management of the Institution Communicated by the Director-Proposals from Staff & Students



  
DIRECTOR  
K.L.S. Institute of Management  
Education & Research



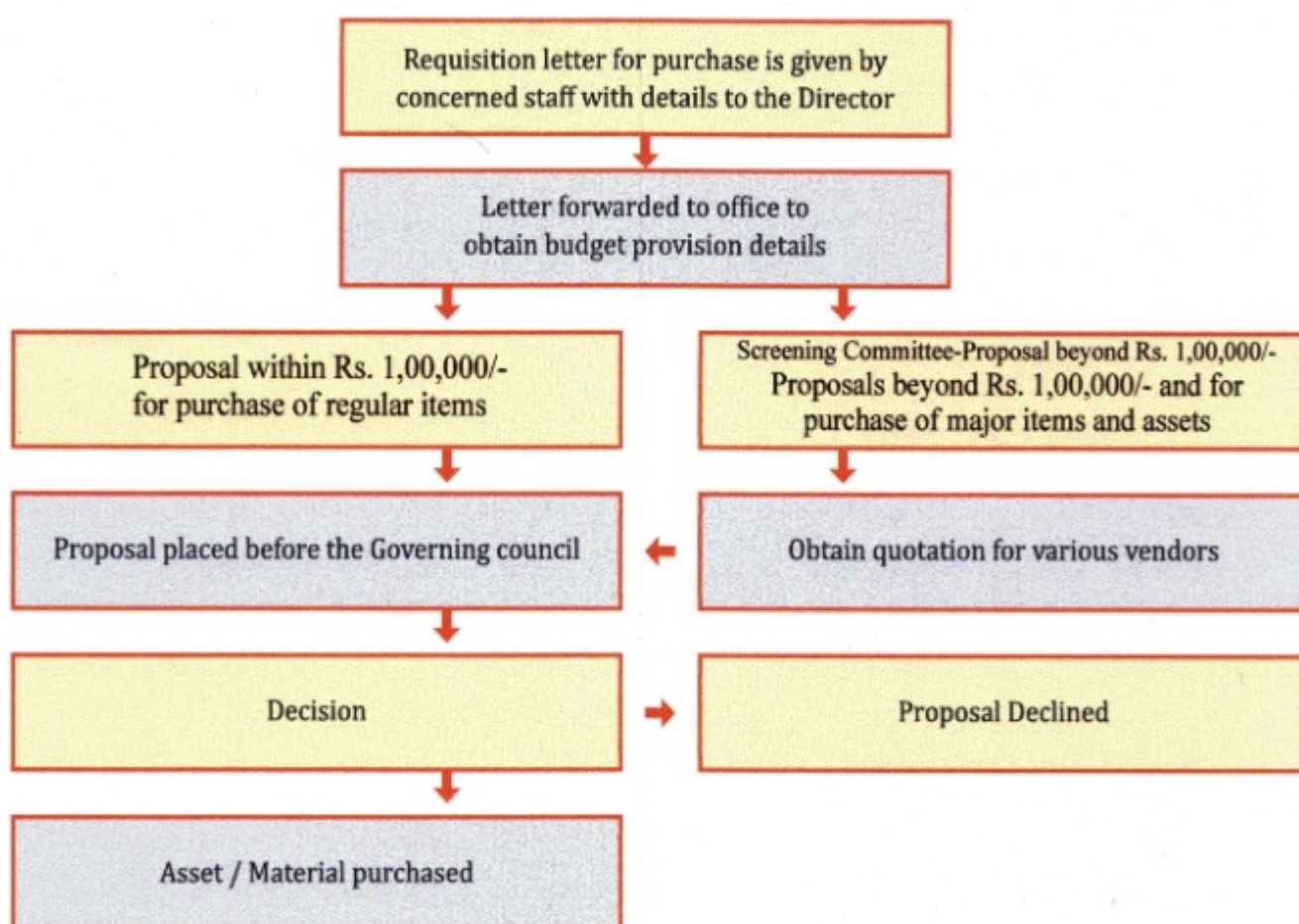
  
S. NIKKANNA  
LIBRARIAN  
K.L.S. Institute of Management  
Education & Research Belagavi



# KLS - IMER, Autonomous, Belagavi

4.4.2 There are established, Systems and Procedures for maintaining and utilizing Physical, academic & support facilities -classrooms, laboratory, library, sports complex, computers etc. (Institution's Policy with details of systems and procedures)

## Materials and Assets Procurement Process



  
**DIRECTOR**  
K.L.S. Institute of Management  
Education & Research

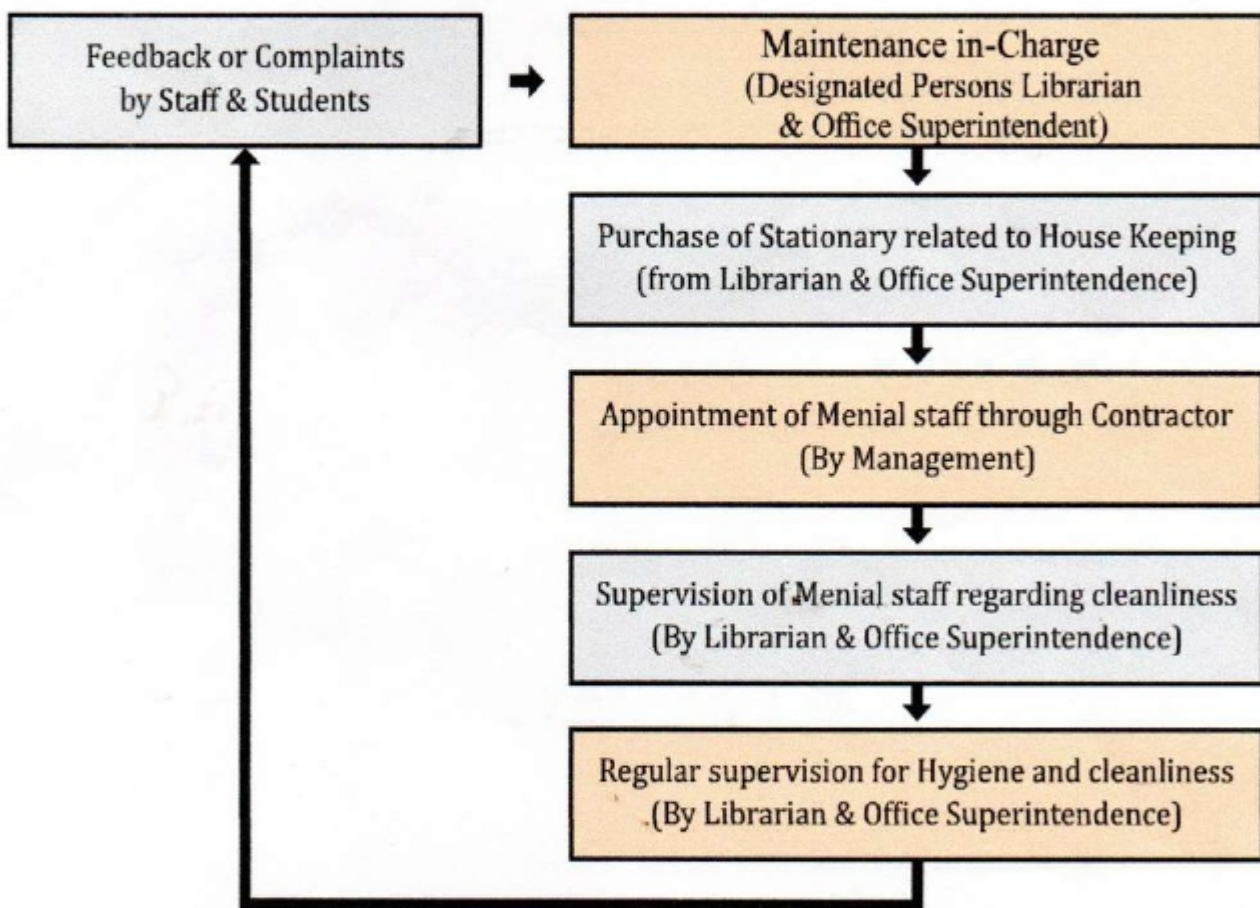


  
(Prof. Sumanth Desai)  
IT Dept.

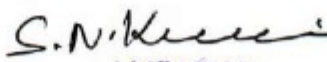
# KLS - IMER, Autonomous, Belagavi

4.4.2 There are established, Systems and Procedures for maintaining and utilizing Physical, academic & support facilities -classrooms, laboratory, library, sports complex, computers etc. (Institution's Policy with details of systems and procedures)

## House Keeping Maintenance & Procurement of House Keeping Materials Process



  
DIRECTOR  
K.L.S. Institute of Management  
Education & Research

  
LIBRARIAN  
K.L.S. Institute of Management  
Education & Research Belgaum

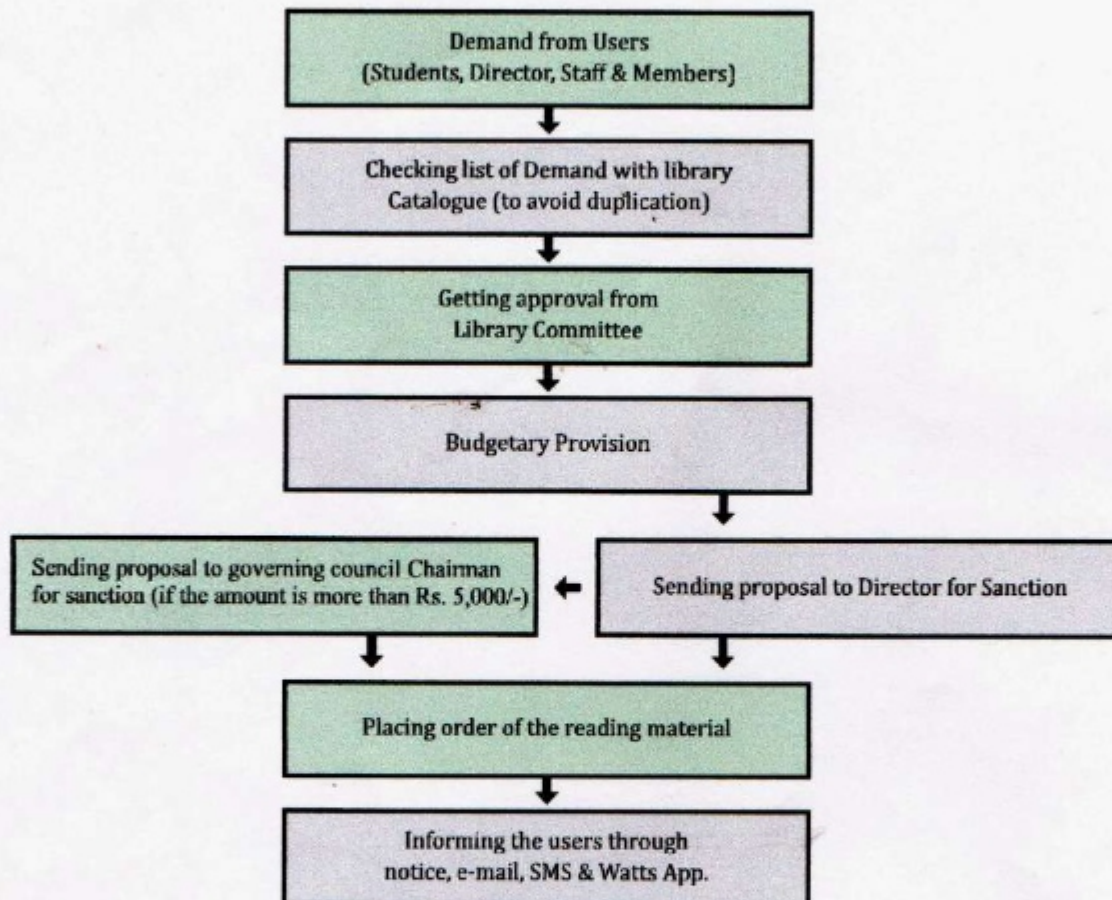




# KLS - IMER, Autonomous, Belagavi

4.4.2 There are established, Systems and Procedures for maintaining and utilizing Physical, academic & support facilities -classrooms, laboratory, library, sports complex, computers etc. (Institution's Policy with details of systems and procedures)

## Library (Knowledge Resource Centre) Reading Materials Procurement Process

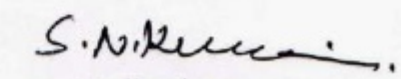


### Knowledge resource center – process of stock verification of books



  
**DIRECTOR**  
K.L.S. Institute of Management  
Education & Research



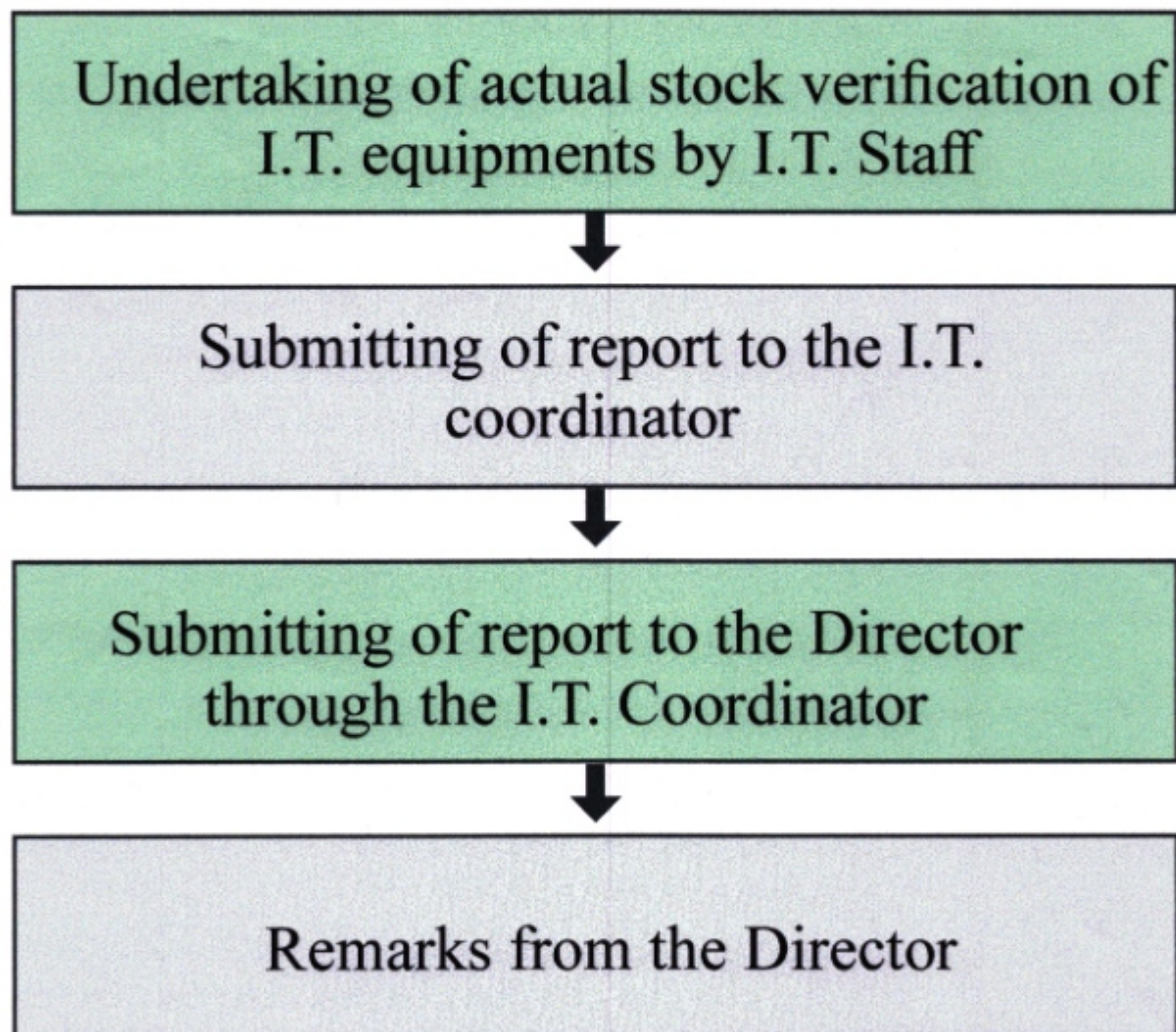
  
**LIBRARIAN**  
K.L.S. Institute of Management  
Education & Research Belgaum



# KLS - IMER, Autonomous, Belagavi


4.4.2 There are established, Systems and Procedures for maintaining and utilizing Physical, academic & support facilities -classrooms, laboratory, library, sports complex, computers etc. (Institution's Policy with details of systems and procedures)

## IT Centre - Process of Stock Verification of I.T. Equipments



  
DIRECTOR  
K.L.S. Institute of Management  
Education & Research.



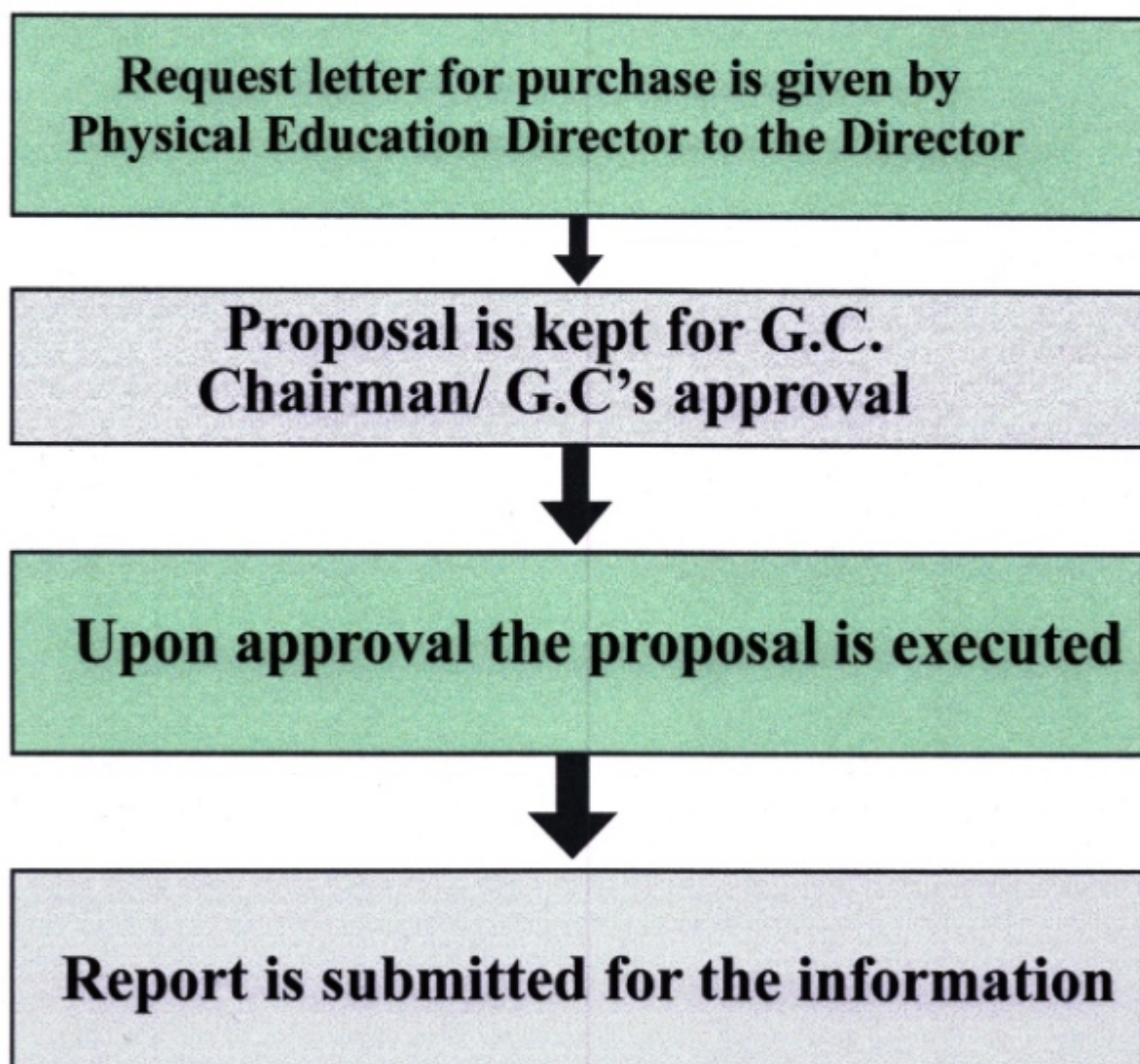
  
(Prof. Sumanth Desai)  
IT Dept.



# KLS - IMER, Autonomous, Belagavi


4.4.2 There are established, Systems and Procedures for maintaining and utilizing Physical, academic & support facilities -classrooms, laboratory, library, sports complex, computers etc. (Institution's Policy with details of systems and procedures)

## Sports Department - Process Chart for Procurement of Sports & Games Materials



  
**DIRECTOR**  
K.L.S. Institute of Management  
Education & Research



  
George Rodrigues  
Asst Physical Education  
Director.